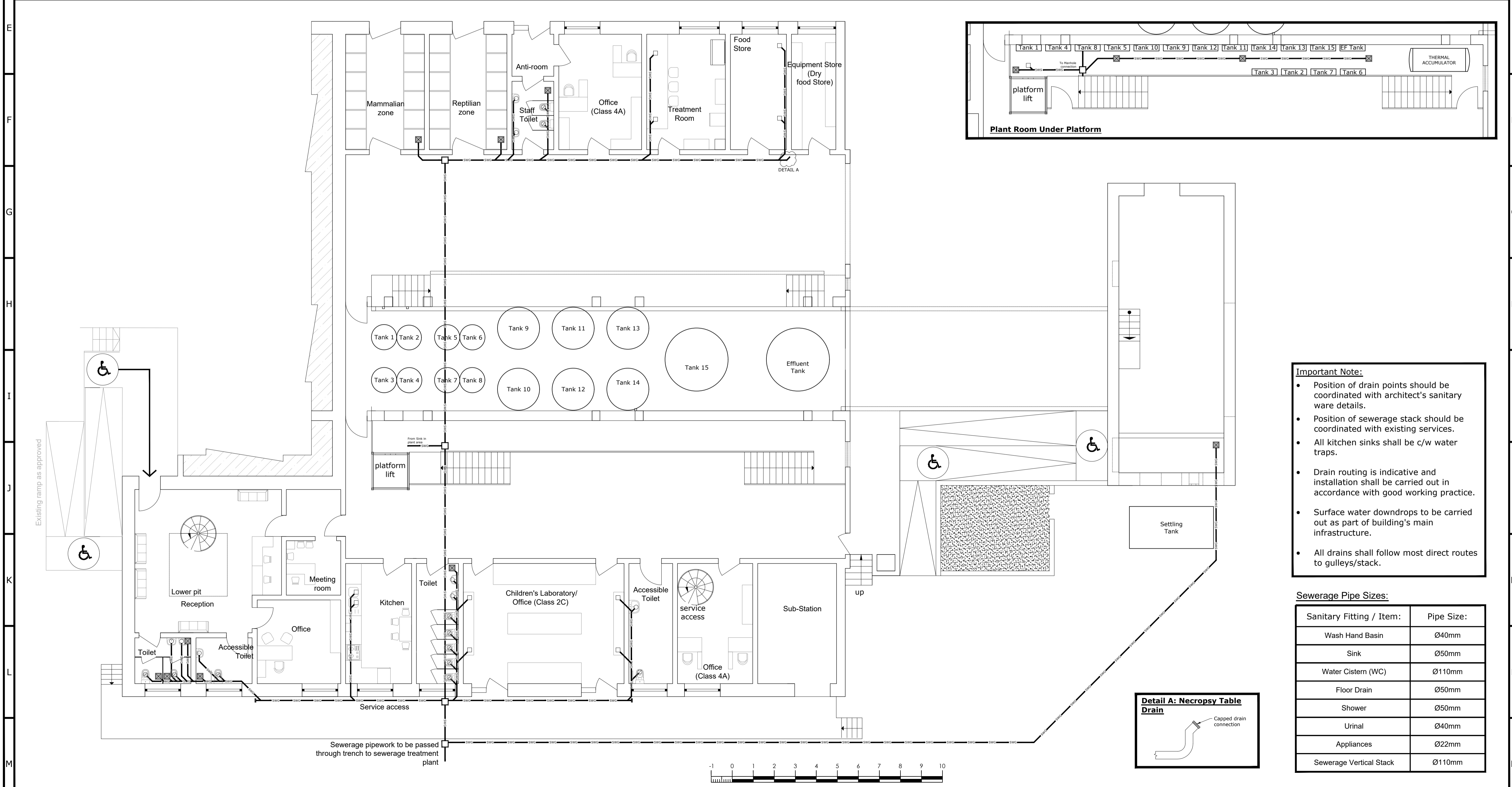


General Notes and Legends

Legend:-

- Sewerage Pipework
- Sewerage Stack
- Rainwater Stack
- Gully
- Wash Hand Basin Connection
- Water Cistern (WC) Connection
- Appliances Connection
- Floor Drain
- Sink Connection
- Shower
- Urinal



Important Note:

- Position of drain points should be coordinated with architect's sanitary ware details.
- Position of sewerage stack should be coordinated with existing services.
- All kitchen sinks shall be c/w water traps.
- Drain routing is indicative and installation shall be carried out in accordance with good working practice.
- Surface water downdrops to be carried out as part of building's main infrastructure.
- All drains shall follow most direct routes to gulleys/stack.

Sewerage Pipe Sizes:

Sanitary Fitting / Item:	Pipe Size:
Wash Hand Basin	Ø40mm
Sink	Ø50mm
Water Cistern (WC)	Ø110mm
Floor Drain	Ø50mm
Shower	Ø50mm
Urinal	Ø40mm
Appliances	Ø22mm
Sewerage Vertical Stack	Ø110mm

-	-	-	-
-	-	-	-
-	-	-	-
-	-	-	-

CAMILLERI & CUSCHIERI
CONSULTING ENGINEERS

Design Center, Level 2, Tower Road, Swatara,
Srinikara, Malte - BKA 4012
+356 21220431
info@camillerianduscieri.com
www.camillerianduscieri.com

40 Years

Project Name & Address:
Nature Trust
Krobb L-Għagin

THIS DRAWING IS CONFIDENTIAL AND IS THE PROPERTY OF CAMILLERI & CUSCHIERI CONSULTING ENGINEERS. IT MUST NOT BE DISCLOSED TO A THIRD PARTY, COPIED OR LENT, WITHOUT THE WRITTEN CONSENT OF CAMILLERI & CUSCHIERI CONSULTING ENGINEERS.

Scale: 1:100	Revision No.: 00	Date: 01.09.20
Job No.: 20.032	Drawing No.: NT-XG.SWG.01.01	
Drawn By: <i>Nayana Abela</i>	Checked By:	
Position: Ground Floor	Service: Sewerage Installation Layout	

A1 PLEASE DO NOT SCALE FROM THE DRAWING